

ACTIVESHOP®

INSTRUCTION MANUAL

Cosmetic chair 557A with trays



Importer:

ACTIVESHOP Ltd.

Ul. Graniczna 8b, building
DC2A 54-610 Wrocław,
Poland

www.activeshop.com.pl

Rev. A/04/2024

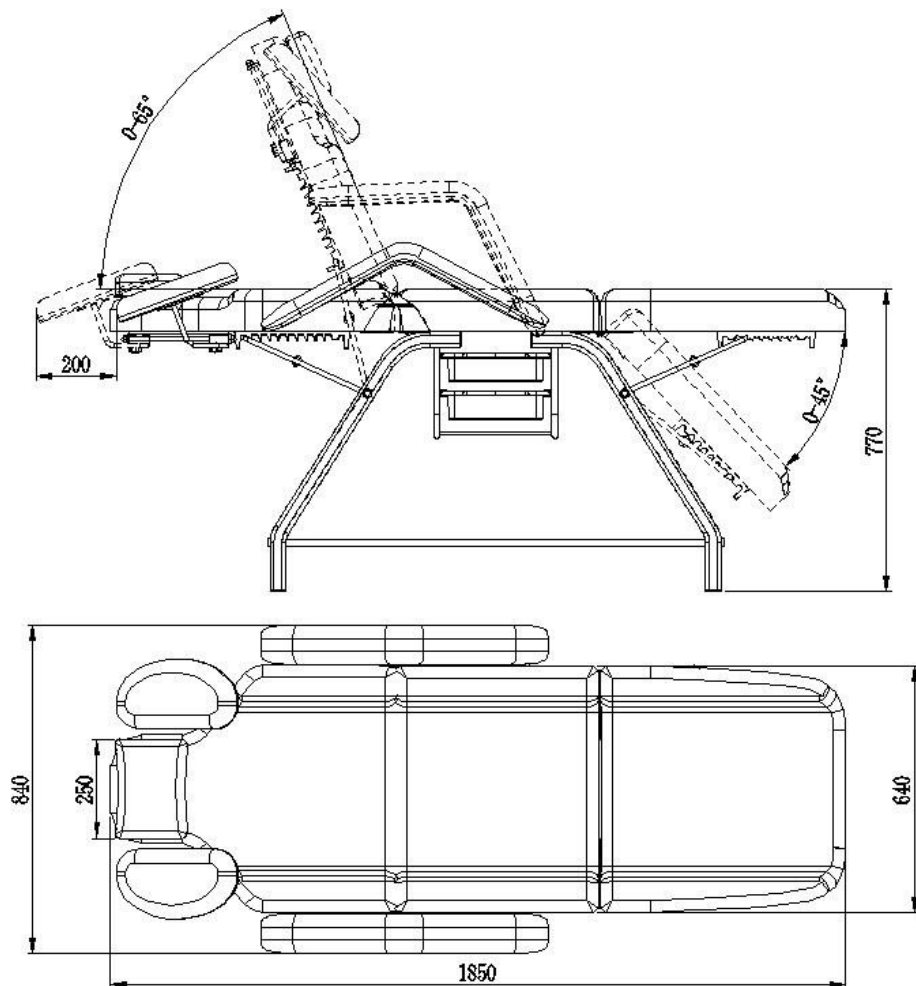
Before using the cosmetic chair, read the instructions and perform the following steps:

1. Make sure all packaging materials are removed.
2. Make sure the seat is in working order.
3. Place the cosmetic chair in the place where it will be used.

Tip! Children and inexperienced people must not use this device. Children must be supervised and must not play near the cosmetic chair.

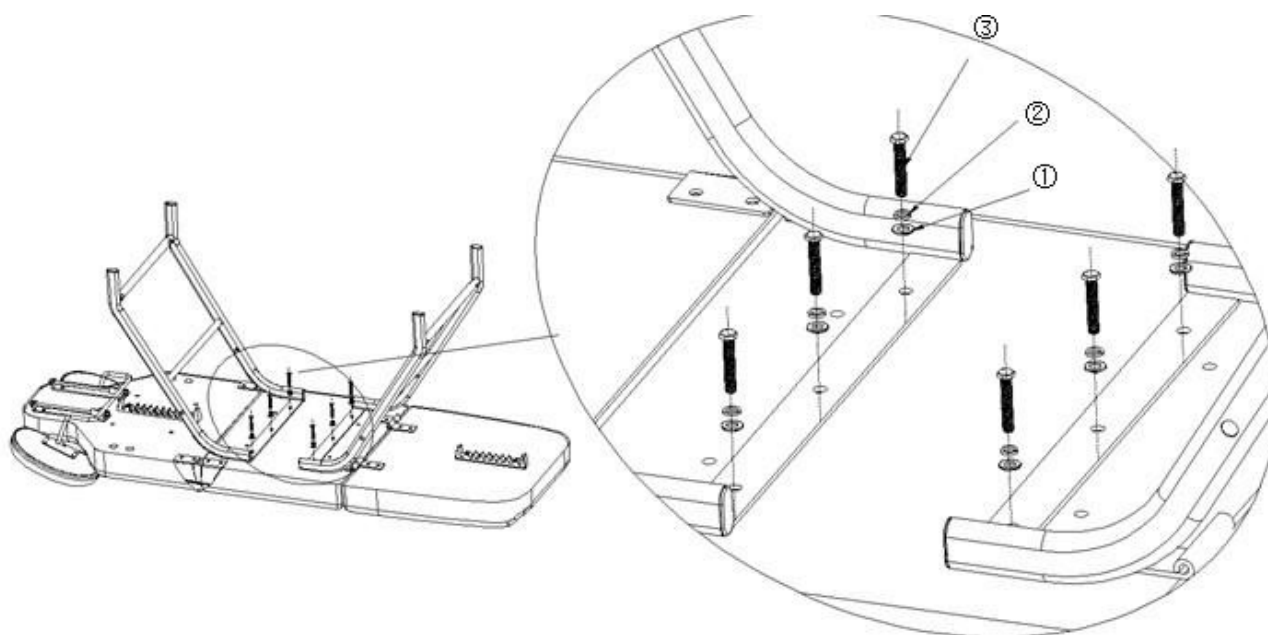
Dimensions:





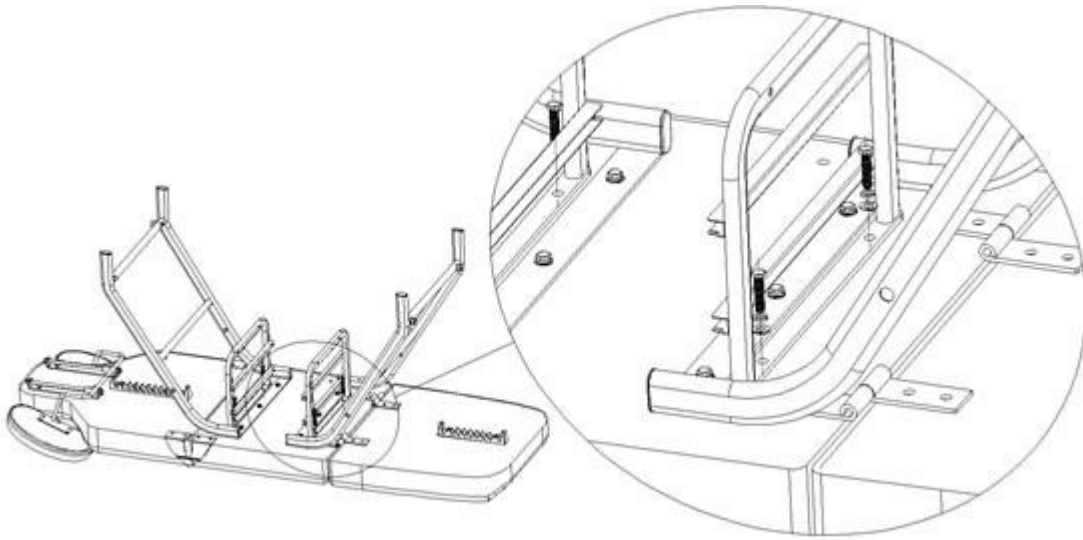
Installation instructions for the device:

Install the chair frame. Lay the couch on a flat, stable surface, then attach the chair frame to the couch with screws. Place the flat carrier (1), then the connector (2) and the bolt (3) one by one.

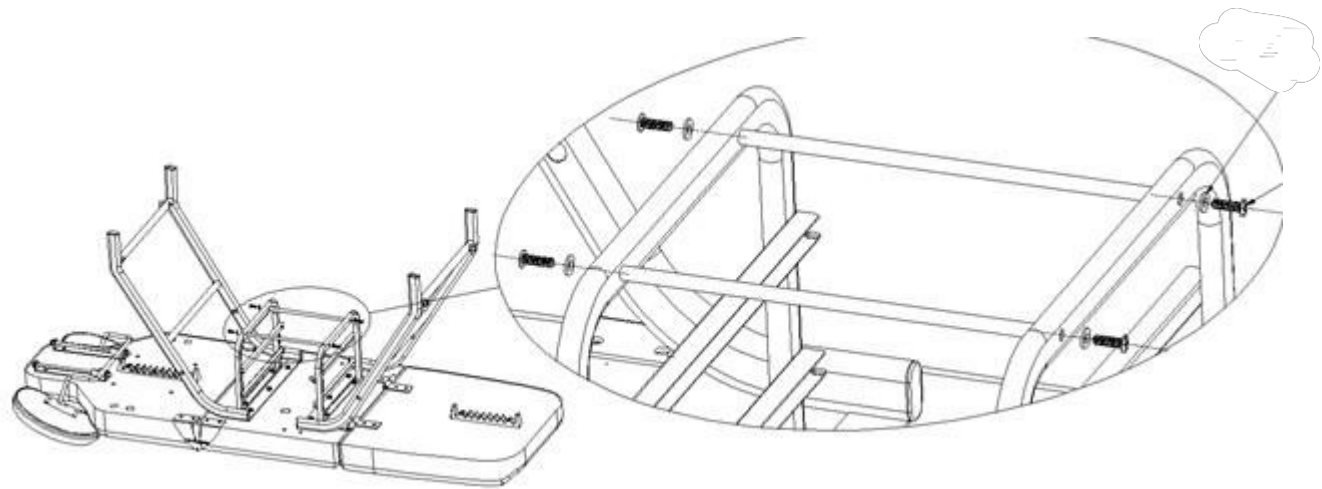


Install the tray bracket:

Put the tray support on the rack and fix it with screws.



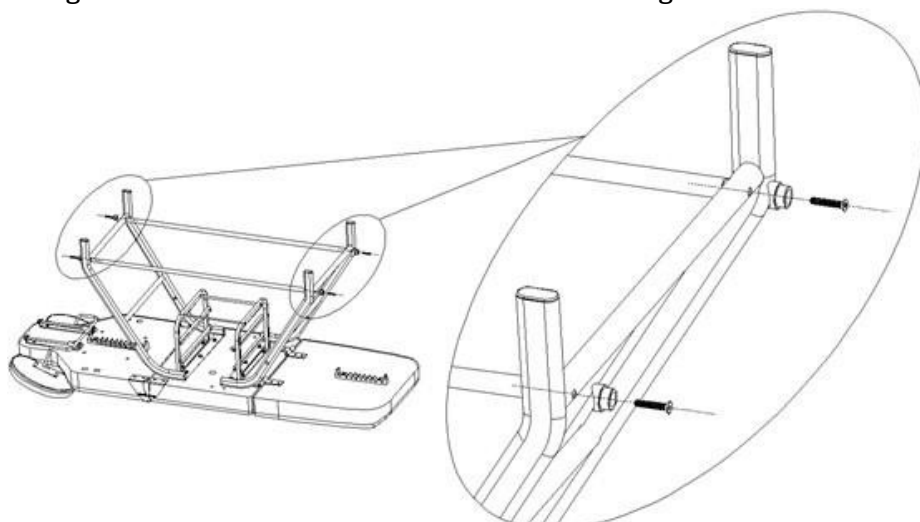
Then connect the tray bracket to the connecting tube and tighten it with screws, as shown in the photo below.

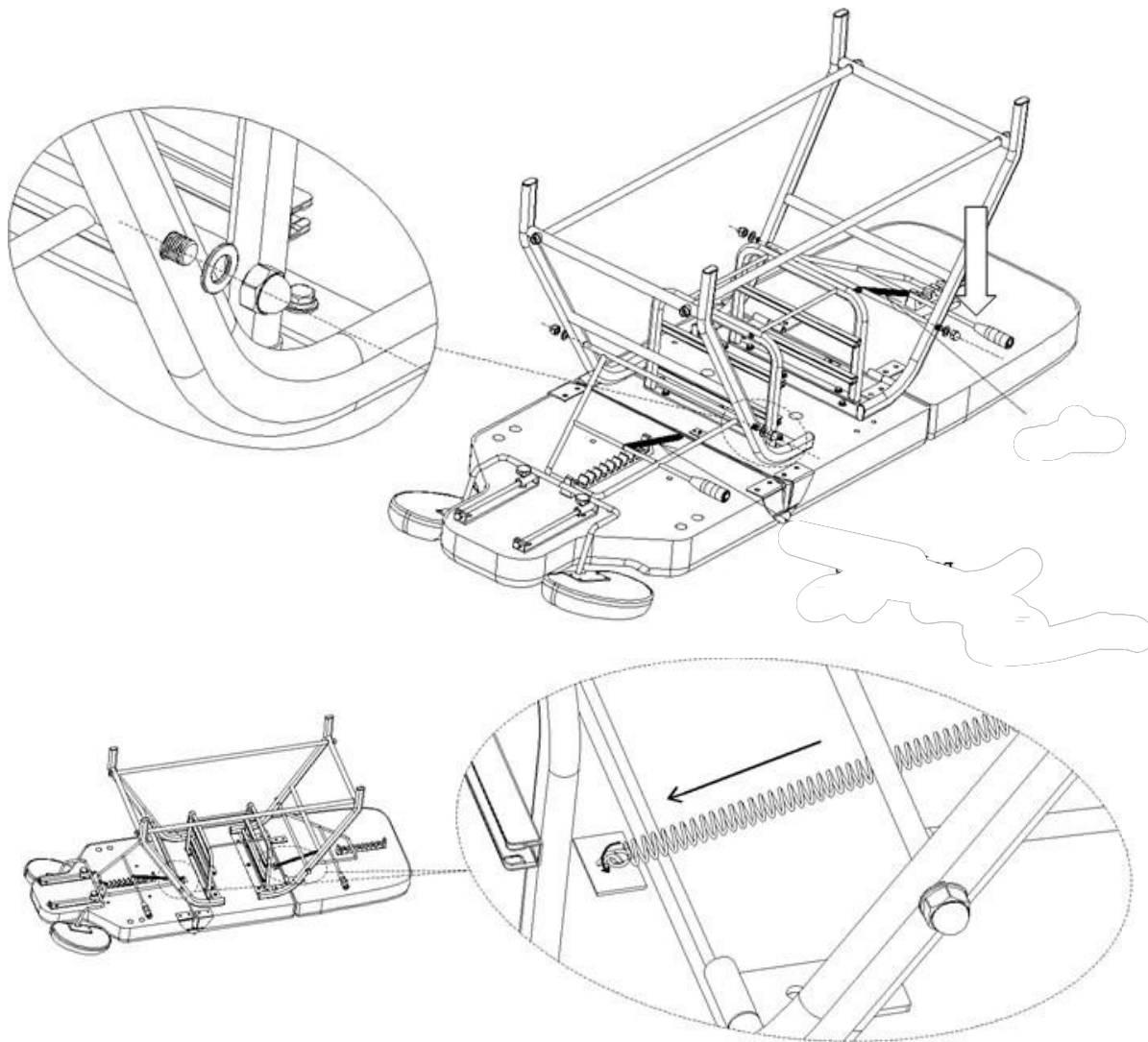


Attach the connecting rod of the chair frame: attach the connecting rod to the 4 holes in the chair legs, using

screws.

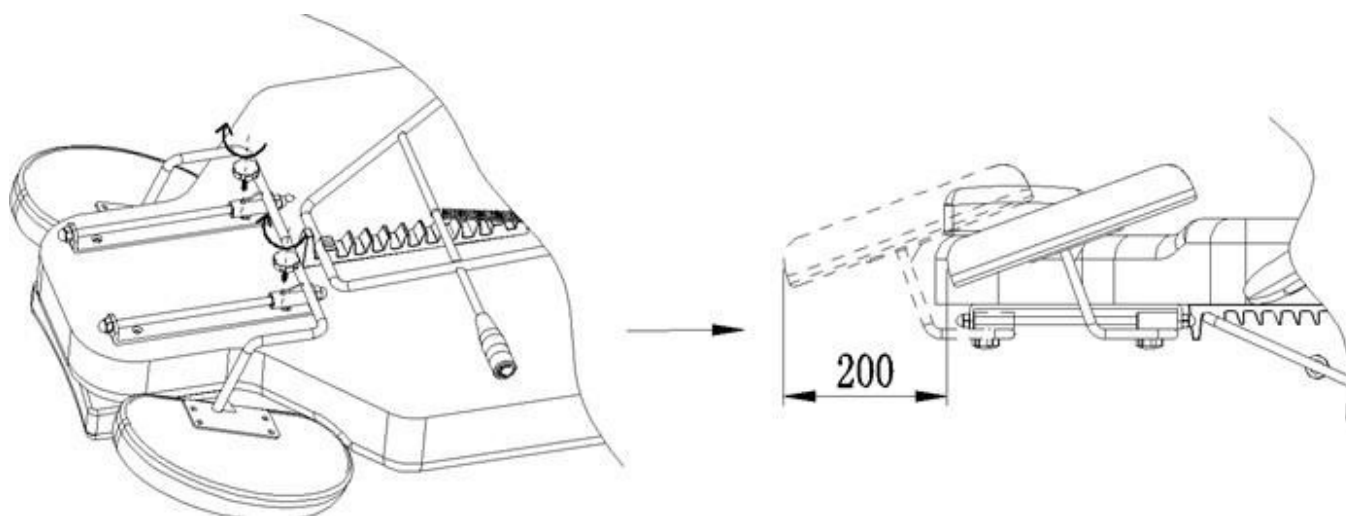
Install the backrest and footrest adjuster on both sides of the chair legs with screws.





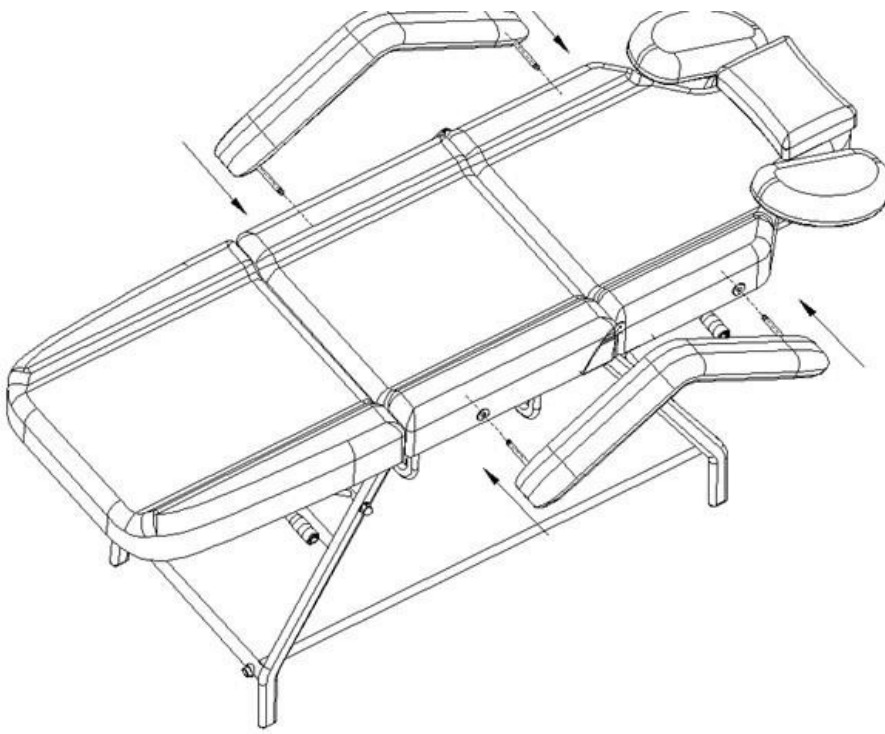
Install the armrest knob

Point the knob to the armrest mounting hole, tighten clockwise. Loosen the knob to move the armrest position as shown in the picture.

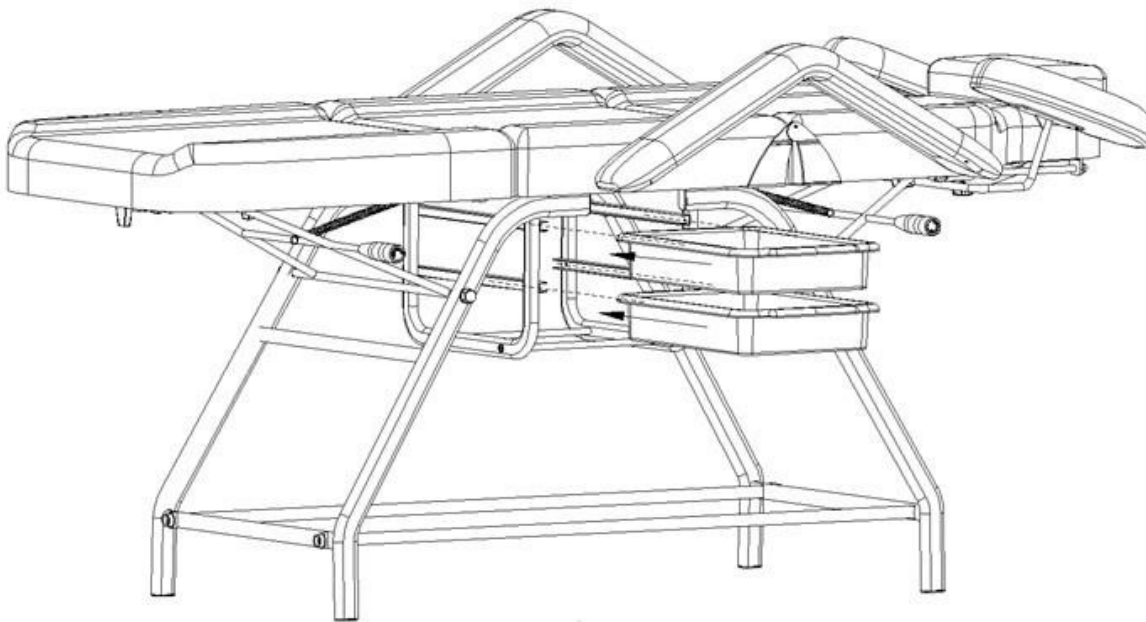


Armrest installation:

Slide the armrest into the hole located on the side of the backrest. The armrest should be firmly attached. Twist it to the right or left so that it goes into place properly.



Install the container as shown in the following photo. Slide the container into the guides located under the seat.



Features of the chair:

1. Backrest lifting

Adjustment of the angles at which the backrest and footrest are located is possible with a manual lever. Both the backrest and the footrest have separate levers, so the height of each part is adjusted separately. This allows the chair to be adjusted individually to make the treatment being performed as comfortable as possible. The chair can be unfolded up to the reclining position.

To raise the backrest, grab the lever and lift it up, and set it to your preferred height.

2. Lowering the backrest

Hold the back of the seat, and with your other hand, grab the handle of the lever and lower it down until you reach the desired position. When you reach your preferred height, let go of the lever.



Cleaning and disinfection of the device:

- To keep the chair's surface in good condition, clean it regularly. Remember to clean and disinfect the chair after each use. It is recommended to perform a thorough disinfection once a month.

I Metal and plastic surfaces

- To clean metal and plastic surfaces and controls wipe them with a damp cloth. To clean hard-to-reach areas or corners, a small brush will work well. Do not use too much liquid to clean the device. Then disinfect the device with a suitable liquid.

II Stainless steel surfaces

- Cleaning with a mild detergent solution will work best. Ammonia and most solvents can be used to remove tough stains. Avoid chlorine-based solutions.

III Painted or chrome-plated metal surfaces

- Do not use water jets (showers, high-pressure water cannons) for cleaning.
- Do not clean in high temperature and high humidity, do not expose the device to conditions that may lead to liquid contamination.
- Do not use solvents and acids for cleaning.

IV Seat surface

- Wipe the surface of the seat evenly with a special leather cleaner, then wipe it with a clean, soft cloth.

Troubleshooting

Problem	Cause	Solution methods
Strange noise during uses	Loose bolt	Tighten the screw

SECURITY MEASURES

1. The device is a professional equipment for use in beauty parlors. Operation of the device only by qualified cosmetic personnel allows to avoid undesirable consequences during the treatment.
2. Do not disassemble the device or attempt to use it for purposes other than those indicated in this manual. Any service and repair work must be performed only by an authorized service technician (ACTIVESHOP Ltd.).
3. Do not install or operate the device near liquids, wet places or with wet hands - so that no liquids get into the device.
4. Immediately remove the plug from the outlet and contact the authorized service provided by ACTIVESHOP Ltd. in the following cases:
 - a) liquid has entered the device, b) the device emits a strange odor, smoke or makes strange sounds, c) the power cord has been damaged, d) the device has been knocked over or its housing has been damaged.
5. Do not put any objects on the cables. Do not install the unit where someone may step on the power cord.
6. For safety purposes, unplug the power cord from the outlet each time you finish working with the device.
7. Do not insert anything into the opening of the device. If a foreign object gets into the hole, remove the cord from the outlet and contact the distributor or manufacturer.
8. Do not place the device on an unstable cart, shelf or vehicle. If dropped, the device may be damaged.
9. In order to guarantee the established useful life of the device, it is recommended to keep an interval of one minute before pressing the power button again (between switching on and off and vice versa).
10. The power supply must comply with the specifications on the nameplate. Otherwise, there is a risk of incorrect operation of the device its damage or even burning.

NOTES:

1. In case of damage to the power cord or other malfunctions, contact an authorized service center - this will avoid danger.
2. This equipment may be used by children at least 8 years of age and by persons with impaired physical and mental capabilities and persons with inexperience and lack of familiarity with the equipment, if supervision or instruction is provided on how to use the equipment in a safe manner so that the associated risks are understood.
3. The device is not intended for play by children. Do not allow children to play with the device.
4. Do not leave the device unattended when children or persons without sufficient knowledge of how to use the device are in the vicinity.
5. This electrical appliance is not a toy. Improper use or contact with the electrical appliance may pose a health risk or lead to death, so use and store the appliance out of the reach of children.

DISPOSAL OF THE DEVICE



Dispose of used electrical appliances, fixtures and packaging to raw material reprocessing centers in accordance with environmental protection principles. Electrical appliances should not be disposed of in household waste containers. Follow the rules for discarding this type of equipment. In order to protect

The environment in accordance with Directive 2012/19/EC on waste electrical and electronic equipment, waste electrical equipment should be collected separately, and then handed over to collection points for waste electronic and electrical equipment. At the end of their useful life, as well as old appliances contain full-value recyclable components, so they should be handed over for reprocessing. Therefore, they should be handed over to appropriate collection points, as well as they can also be handed over to ACTIVESHOP Ltd.

STORAGE AND TRANSPORT

The device should be transported at a temperature in the range of (-) 20 °C to (+) 50 °C only in its original packaging. Store the device in a well-ventilated and relative humidity of no more than 75%. Operating temperature from (+) 10 °C to (+) 40

°C. During the storage and transportation processes, the device must not be thrown or dropped, exposed to mechanical shocks or weathering.